

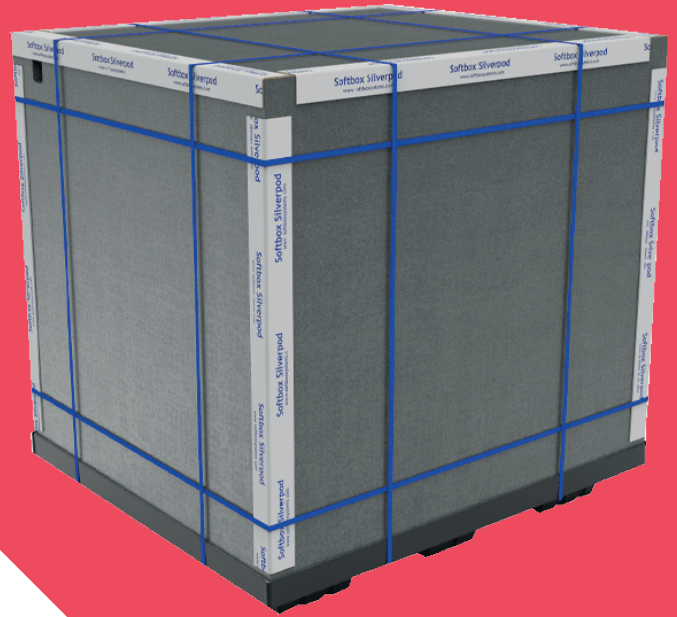


SilverpodMAX

PCM Bulk Air Cargo Pallet Shippers

Silverpod MAX pallet shippers combine advanced patented insulating panels with next generation, Pharma-cool MAX refrigerants which are easy to condition. This combination ensures maximum protection of the internal temperature-sensitive payload during storage and transportation for longer durations.

Silverpod MAX provides overall shipping cost reductions versus water-based pallet shippers, and enables safe cold storage before and during shipping, minimizing the risk of temperature excursions.



Key Features



Single-use PCM pallet shippers



Utilizes next generation Pharma-cool MAX refrigerants



PCM enables safe storage before and during shipping



120+ hours of qualified thermal protection



Easy conditioning process



Easy assembly speeds up packing process



Supplied flat packed for cost-effective delivery and storage



Globally available via extensive supply network



PAYLOAD (LITERS)
135–2585



TEMPERATURE RANGE
+2°C to +8°C



DURATION (HOURS)
120+

PRODUCT NAME	PAYLOAD	TEMPERATURE RANGE	DURATION	INTERNAL SPACE L x W x H	EXTERNAL DIMENSIONS L x W x H	TARE WEIGHT
Silverpod MAX Narrow Body Aircraft	135 L 4.75 cu ft	+2°C to +8°C	120+ hrs	900 x 500 x 300 mm 35.43 x 19.68 x 11.81 in	1200 x 800 x 710 mm 47.24 x 31.49 x 27.95 in	54.5 kg 120 lbs
Silverpod MAX Small	264 L 9.32 cu ft	+2°C to +8°C	120+ hrs	880 x 480 x 625 mm 34.64 x 18.89 x 24.60 in	1200 x 800 x 1080 mm 47.24 x 31.49 x 42.51 in	91.5 kg 201 lbs
Silverpod MAX Medium	485 L 17.12 cu ft	+2°C to +8°C	120+ hrs	880 x 680 x 810 mm 34.64 x 26.77 x 31.88 in	1200 x 1000 x 1260 mm 47.24 x 39.37 x 49.60 in	123 kg 271 lbs
Silverpod MAX Large	661 L 23.34 cu ft	+2°C to +8°C	120+ hrs	880 x 680 x 1105 mm 34.64 x 26.77 x 43.50 in	1200 x 1000 x 1550 mm 47.24 x 39.37 x 61.02 in	145 kg 319 lbs
Silverpod MAX LD7 Quarter PMC	1195 L 42 cu ft	+2°C to +8°C	120+ hrs	1225 x 856 x 1140 mm 48.23 x 33.70 x 44.88 in	1565 x 1196 x 1570 mm 61.61 x 47.08 x 61.81 in	201 kg 443 lbs
Silverpod MAX Single	1458 L 51 cu ft	+2°C to +8°C	120+ hrs	1250 x 1060 x 1100 mm 49.21 x 41.73 x 43.30 in	1565 x 1375 x 1560 mm 61.61 x 54.13 x 61.41 in	200 kg 441 lbs
Silverpod MAX LD7 Half PAG	2585 L 91 cu ft	+2°C to +8°C	120+ hrs	1880 x 1250 x 1100 mm 74.01 x 49.21 x 43.30 in	2195 x 1565 x 1590 mm 86.41 x 61.61 x 62.59 in	373 kg 822 lbs

Contact us at passivesolutions@csafeglobal.com

CSafe has a worldwide network of comprehensive service centers, manufacturing facilities, sales offices and local hub sites to provide solutions where and when you need them. With representatives across the Americas, EMEA and APAC, local and regional support is always available.