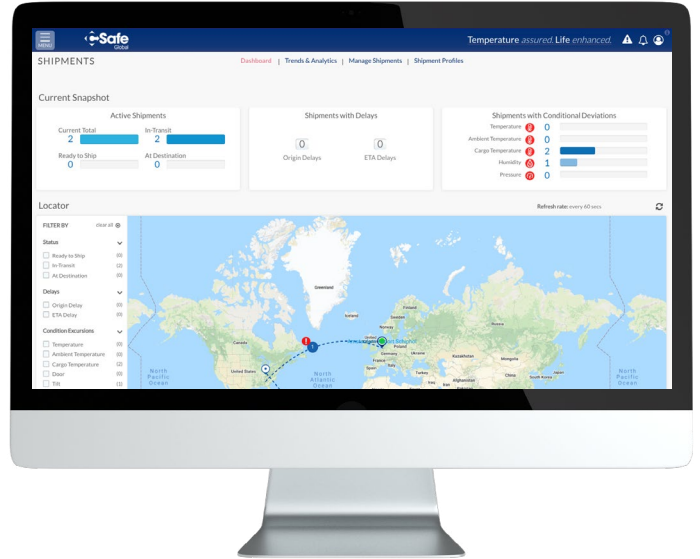




Control Tower Offers White-Glove Service for Shipment Monitoring

CSafe Control Tower, our new shipment monitoring service through CSafe Connect, is designed to add an extra layer of convenience and peace of mind for our RKN, RAP, and APS customers worldwide. Our global Control Tower team is dedicated to monitoring shipments around the clock in real time to ensure that we see, understand, and escalate any potential issues before they become bigger problems. Plus, we make the whole process easy, handling all setup on your behalf and providing a shipment report immediately upon delivery.



Key Features



Available for RKN and RAP active containers, and APS passive containers worldwide



Shipment creation and pre-conditioning services



24/7 dedicated CSafe service team



Real-time GPS and cargo temperature monitoring



Shipment analysis and data processing



Escalation and resolution through stakeholder collaboration



Alert management



PDF report after every shipment

Contact us at sales@csafeglobal.com

CSafe has a global network of service centers, stations, supply points and team members to provide support and solutions where and when you need them. CSafe and the logo designs presented in this material are trademarks or registered trademarks of CSafe. ©2024 CSafe

