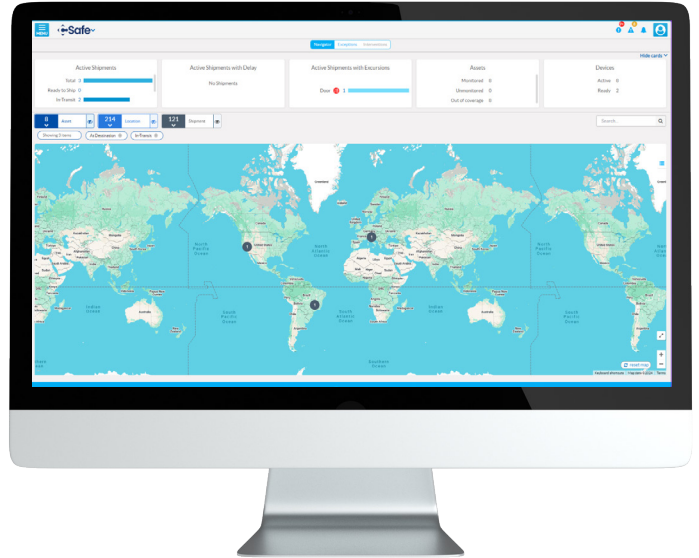












Control Tower Offers White-Glove Service for Shipment Monitoring

CSafe Control Tower, our new shipment monitoring service through CSafe Connect, is designed to add an extra layer of convenience and peace of mind for our RKN, RAP, APS, and CGT dewars customers worldwide. Our global Control Tower team is dedicated to monitoring shipments around the clock in real time to ensure that we see, understand, and escalate any potential issues before they become bigger problems. Plus, we make the whole process easy, handling all setup on your behalf and providing a shipment report immediately upon delivery.



Key Features

 <p>Available for RKN and RAP active containers, APS passive containers, and CGT dewars worldwide</p>	 <p>Shipment creation and pre-conditioning services</p>	 <p>24/7 dedicated CSafe service team</p>	 <p>Real-time GPS and cargo temperature monitoring</p>
 <p>Shipment analysis and data processing</p>	 <p>Escalation and resolution through stakeholder collaboration</p>	 <p>Alert management</p>	 <p>PDF report after every shipment</p>

Contact us at: sales@csafeglobal.com

CSafe has a global network of service centers, stations, supply points and team members to provide support and solutions where and when you need them. CSafe and the logo designs presented in this material are trademarks or registered trademarks of CSafe. ©2025 CSafe