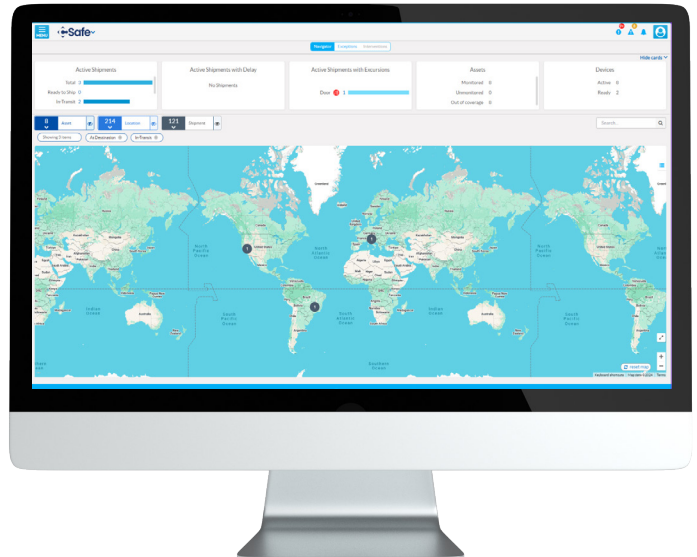




Control Tower Offers White-Glove Service for Shipment Monitoring

We understand the importance of ensuring the safety and integrity of your shipments. That's why we've created CSafe Control Tower, a premium shipment set-up and monitoring service through CSafe Connect, designed to give you peace of mind throughout the entire shipping process. Our global Control Tower team actively monitors your shipments in real time, 24/7, for RKN, RAP, APS, and CGT dewar customers worldwide. We handle all the work for you—watching over each shipment to anticipate and address any potential issues before they become problems, so you don't have to worry.

From setup to delivery, we ensure a seamless experience. Our dedicated team keeps a close eye on your shipments, intervening quickly if needed to keep things running smoothly. You'll receive a detailed shipment report immediately upon delivery, keeping you informed every step of the way. With CSafe Control Tower, your shipments are always in good hands.



Key Features



Available for RKN and RAP active containers, APS passive containers, and CGT dewars worldwide



Shipment creation and pre-conditioning services included



24/7 dedicated CSafe service team



Real time GPS and cargo temperature monitoring



Shipment analysis and data processing



Escalation and resolution through stakeholder collaboration



Alert management



PDF report after every shipment

Contact us at: sales@csafeglobal.com

CSafe has a global network of service centers, stations, supply points and team members to provide support and solutions where and when you need them. CSafe and the logo designs presented in this material are trademarks or registered trademarks of CSafe. ©2025 CSafe

csafeglobal.com

